

# CORE RETURN AND INSTALLATION TIPS

(FOR CM330, CM331, CM332, CM333 & CM441)

## RETURN CORE TO PLACE OF PURCHASE, NOT TO C & M

Cores must be returned in original packaging and must be equivalent to the unit purchased.

Cores must be rebuildable and undamaged except for normal wear.

Damaged (i.e. mushroomed head on Pitman shaft) or disassembled units will be dealt with on an individual basis and may receive full, partial or no credit.

In order to protect packaging and prevent damage to core, please drain and clean unit thoroughly, install plugs and place unit in plastic bag provided.

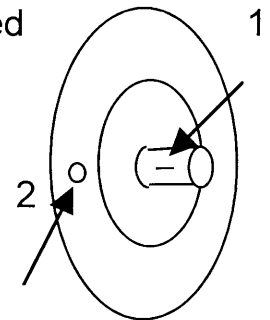
## INSTALLATION TIPS

[These tips are meant to possibly aid the installer,  
not to replace the factory job labor description.]

1. Lock steering wheel and center if necessary.
2. Center gearbox by roughly aligning mark on steering shaft (arrow #1, engraved line in groove between splines, marked with yellow paint) with yellow paint mark (arrow #2) on upper bearing cap.

Note: gearbox should be centered when you receive it.

3. Install steering coupler on gearbox (if bushings are worn, replace coupler - part #115-460-05-10), making sure that mark on steering shaft (1) is aligned as close to center as possible in coupler pinch bolt slot.
4. Install gearbox in car, making sure that marks on pitman arm and pitman shaft are aligned. Note: on 107 chassis, ball hex socket (Snap-on part #FABLM6) can be used to tighten upper coupler pinch bolt.
5. As with all suspension or steering component replacements, car should then receive a complete alignment.



Note: following the above installation procedure will help to avoid problems such as - Too much play in steering.

Steering wheel misaligned.

Steering won't return correctly.

Turn signals won't cancel properly.

## TECH LINE

Hours: Monday through Friday - 7:00am to 3:00pm (Pacific Standard Time).

Call (702)734-8090 to speak to a factory technician if you have questions or problems with any of the following:

Part application or diagnosis.

Installation procedure.

Possible defective unit.

Core return or credit.